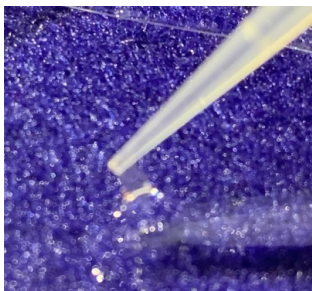
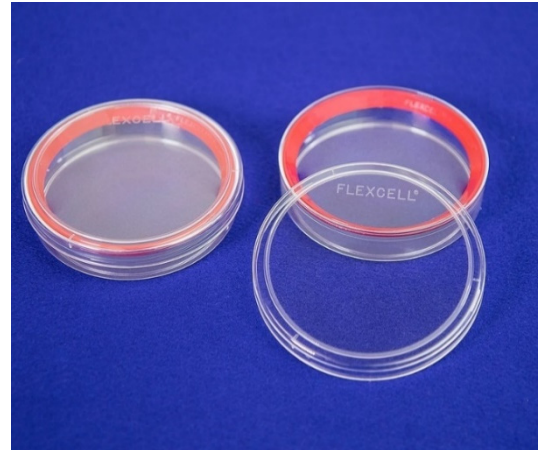


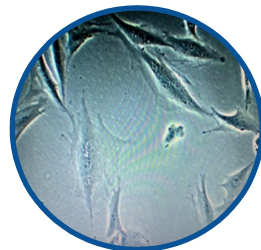
# NEW! CellSoft™ Culture Ware

CellSoft™ offers softer substrates to match the material properties of tissue niches to better meet the needs of biological laboratories wanting to grow their cells on native stiffness.

- Soft silicone elastomer coated membranes.
- 60 and 100 mm dia. dishes (optically clear for direct viewing of cells with inverted or upright microscopes).
- BioFlex® CellSoft™ 6-well and 24-well plates.
- Chamber slides CellSoft™.
- Moduli from 1-80 kPa.
- Ideal for passaging cell lines for expansion.
- Low autofluorescence for use in immunohistochemical assays or with fluorescent probes.
- Covalently bonded surfaces: Amino, Collagen (Type I or IV), Elastin, ProNectin (RGD), Laminin (YIGSR) and untreated.
- Store at room temperature or 4 °C in the dark or out of direct light for up to 1 year.

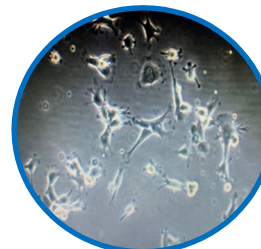


Cellsoft™ soft substrate culture ware shown with 0.5 kPa stiffness!



Polystyrene 2gP

vs.



CellSoft™

## Tissue Moduli Ranges in kPa



0.2 – 0.5 kPa



0.5 – 2.0 kPa



2 – 8 kPa



8 – 16 kPa



16 – 32 kPa



32 – 64 kPa

➔ Flexcell® recommends that users culture their stock cells on a given stiffness substrate matrix coating and conduct their experiment on the same type of surface. In this way, the cells do not experience “substrate shock” moving from one stiffness and matrix coating to another.

## Ordering Information

**CellSoft™ culture dishes and plates** are sold individually or in packs of 5. Each plate is sterile and individually packaged in a sealed bag. See the table below for catalogue numbers and corresponding protein coatings.

→ *Please note that all culture dishes and plates in the table below are available in various ranges of stiffness: **1, 5, 10, 20, 40 and 80 kPa.***

Cat. No.	Description
	<b>100 mm dia. round dish</b>
CSoft100mm-U	Untreated 100 mm dia. round dish
CSoft100mm-C	Collagen I coated 100 mm dia. round dish
	<b>6-well polystyrene plate</b>
CSoft06-U	Untreated 6-well polystyrene plate
CSoft06-C	Collagen I coated 6-well polystyrene plate
	<b>12-well polystyrene plate</b>
CSoft12-U	Untreated 12-well polystyrene plate
CSoft12-C	Collagen I coated 12-well polystyrene plate
	<b>24-well polystyrene plate</b>
CSoft24-U	Untreated 24-well polystyrene plate
CSoft24-C	Collagen I coated 24-well polystyrene plate
DISCOVERY-CSoft24-U	Untreated 24-well polystyrene plate – 1, 5, 10, 20, 40, and 80 kPa
DISCOVERY-CSoft24-C	Collagen I coated 24-well polystyrene plate - 1, 5, 10, 20, 40, and 80 kPa
	<b>96-well polystyrene plate</b>
CSoft96-U	Untreated 96-well polystyrene plate
CSoft96-C	Collagen I coated 96-well polystyrene plate
	<b>6-well BioFlex® plate</b>
CSoftBF-U	Untreated 6-well BioFlex® plate
CSoftBF-C	Collagen I coated 6-well BioFlex® plate
	<b>24-well BioFlex® plate</b>
CSoftHTBF-U	Untreated 24-well BioFlex® plate
CSoftHTBF-C	Collagen I coated 24-well BioFlex® plate