

## StageFlexer<sup>®</sup> Microscopy Device (SF-3000)

### A single-well embodiment of a BioFlex<sup>®</sup> culture plate well.

- Designed to strain cells in monolayer while observing the cellular activity with an **upright microscope** in real-time.
- Device can be used with FX-6000<sup>™</sup> Tension, FX-6000<sup>™</sup> Tissue Train<sup>®</sup> System, and Flex Jr. Tension System that allow the control of strain frequency, amplitude, waveform, and cycles (or time period).
- StageFlexer<sup>®</sup> consists of a single 35 mm well.
- Membranes are deformed across a cylindrical Loading Post (equibiaxial strain).
  
- StageFlexer<sup>®</sup> Microscopy Devices includes:
  - StageFlexer<sup>®</sup> device
  - Three cylindrical Loading Posts (25 mm, 28 mm, and 31 mm) used to vary strain magnitudes
  - Gaskets, o-ring, snap ring, and pliers
  - Silicone-based lubricant
  - Six StageFlexer<sup>®</sup> membranes

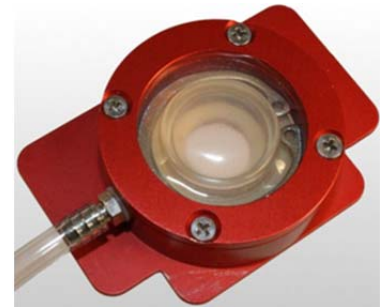


Figure 17. StageFlexer<sup>®</sup>.

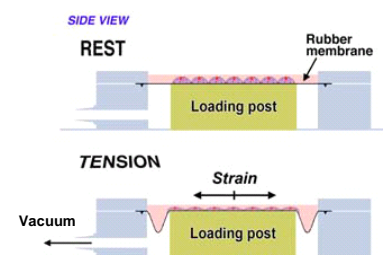


Figure 18. Strain application to cells in a StageFlexer<sup>®</sup> device.